

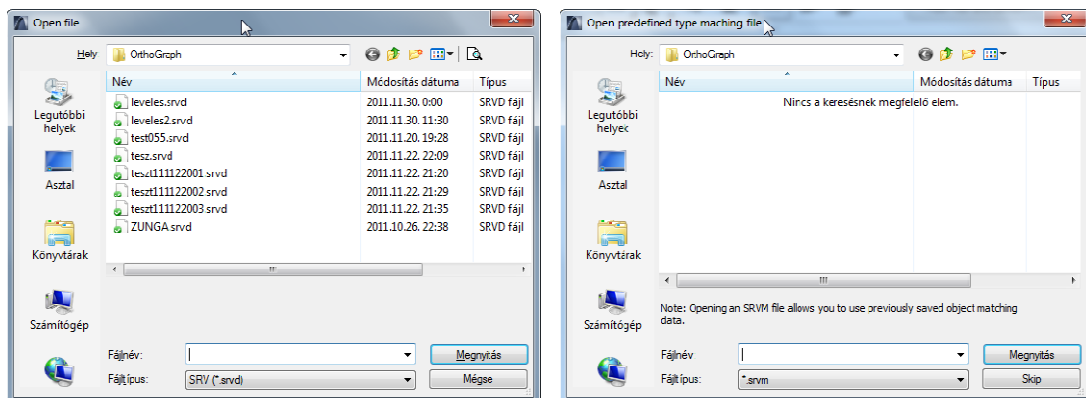


Opening OrthoGraph Architect files (.srvd) in ArchiCAD™

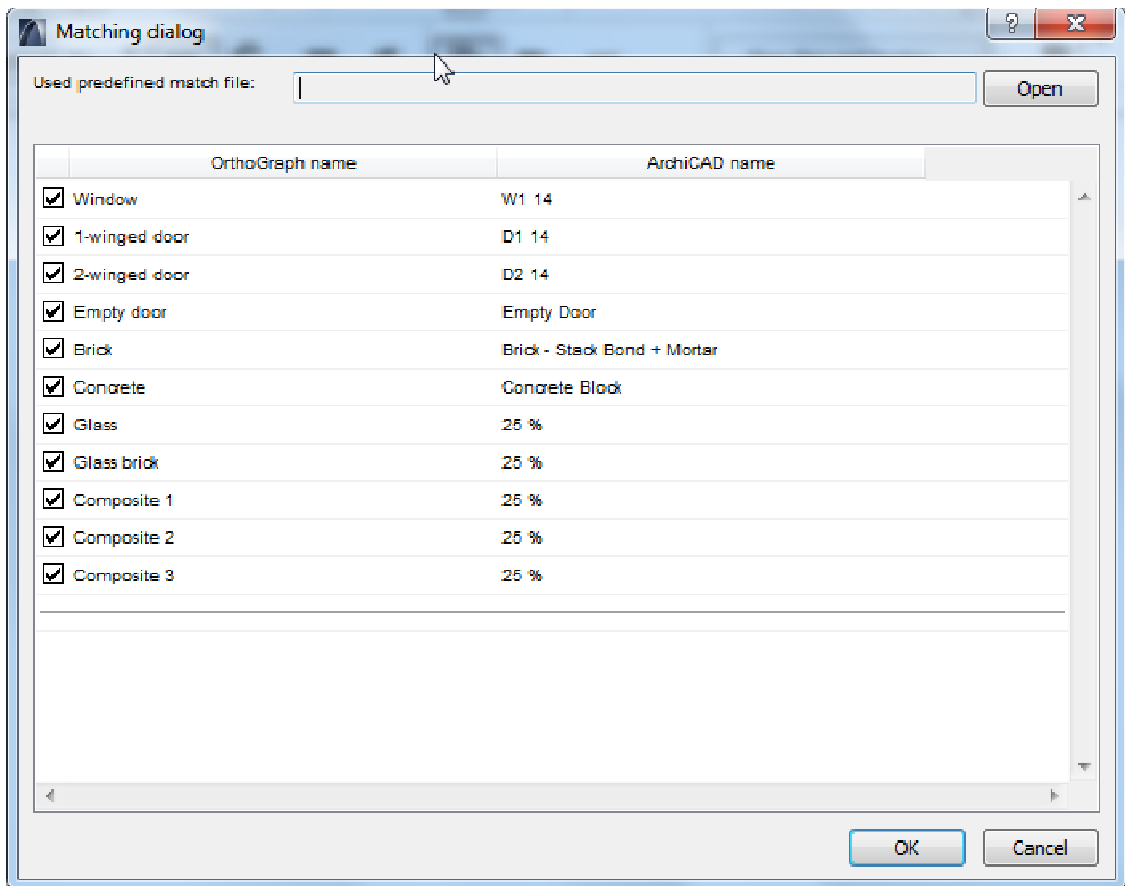
ArchiCAD add-on

Graphics survey made with OrthoGraph Architect can easily be further used in ArchiCAD. In case you have ArchiCAD installed on your computer, then by installing OrthoGraph ArchiCAD Import Module your ArchiCAD's open function will be extended to natively support OrthoGraph Architect's file format (".srvd").

Opening an OrthoGraph ".srvd" file in your ArchiCAD

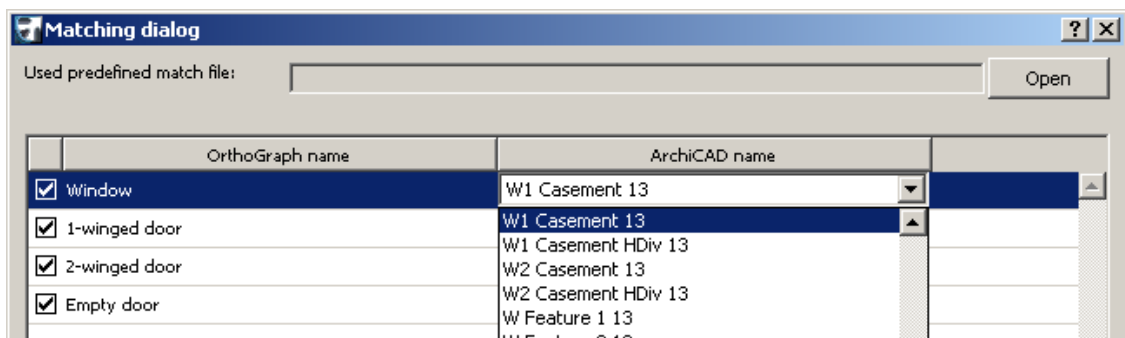


If your OrthoGraph ArchiCAD Import Module is installed properly, you can easily open your survey files from the ArchiCAD Open menu. After opening an „.srvd” file in ArchiCAD the program offers to open a type definition file (like the „.shx” file at „.dwg” import), this enables the use of earlier made OrthoGraph-ArchiCAD associations. In case we have no „.srvm” file, or we want to create new associations we can proceed with pressing the Skip button. In case we needed an „.srvm” file later we still can use the Open button in the top of the association wizard.

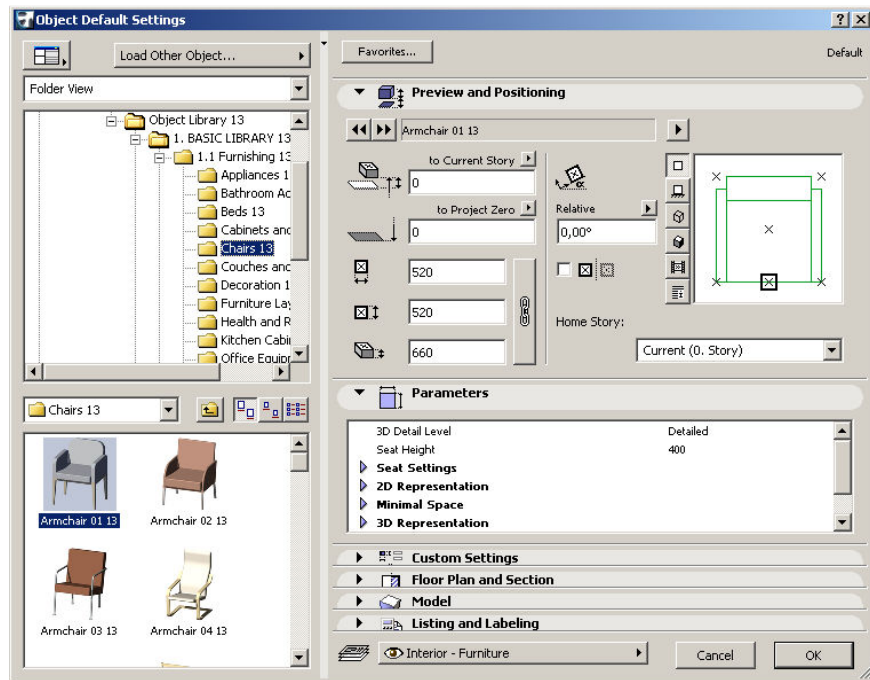


In the Matching dialog we can associate the OrthoGraph and ArchiCAD objects: in the upper section the wall openings and the walls, on the bottom section the objects can be associated.

Highlighting a wall opening entry and pressing the arrow on the right side, a drop down list appears, where one can select the corresponding ArchiCAD wall opening.



Objects can be associated similarly, but instead of the drop down list now we can use the familiar *Object settings* dialog.



After above associations we can save a type definition file („.srvm”) for later projects. With this step our survey is imported, and finally we have a 3D model of the original OrthoGraph Survey in ArchiCAD.

